

www.oui.edu.in



ORIENTAL UNIVERSITY

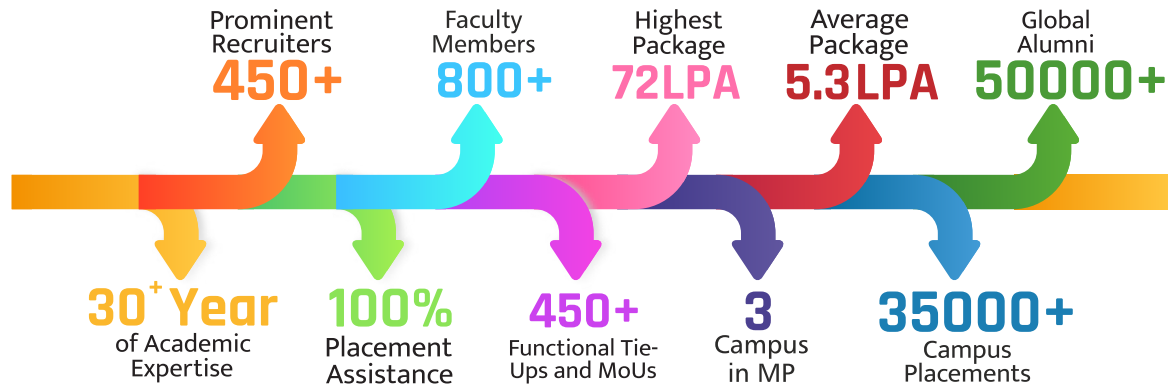
ADMISSIONS

OPEN

EDUCATION
is not preparation for life, It is
LIFE ITSELF



Legacy of Oriental group (OGI)



Awards and Accolades



Approvals & Recognitions

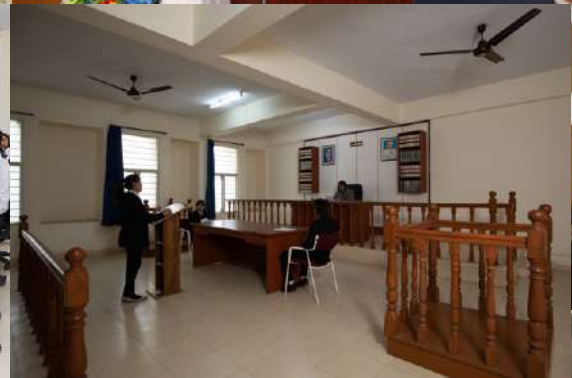
Approved under section 2f of UGC, 1956 Act , Established in May 2011

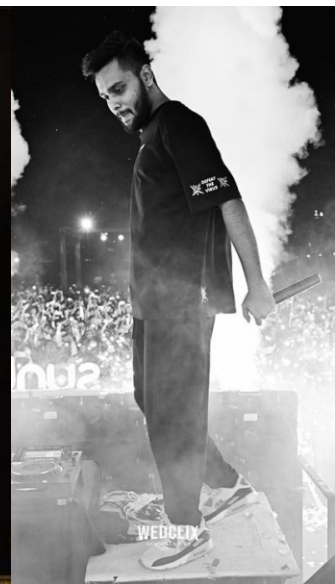




**LIFE AT
ORIENTAL
GROUP...**









**Shri Praveen Thakral, Chancellor
Oriental University, Indore**

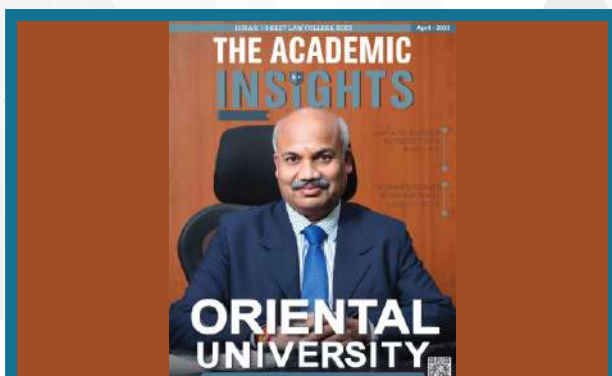


**Shri Gaurav Thakral, Pro Chancellor
Oriental University, Indore**





Prof.(Dr.) Dhruva Ghai, Pro Vice Chancellor
Oriental University, Indore



Prof.(Dr.) Sunil K. Somani, Vice Chancellor
Oriental University, Indore



Programs Offered Under

Faculty of Agriculture

- ✱ **BSc (Agriculture) (Hons)**
- ✱ **MSc (Agriculture)**
 - Agronomy
 - Genetics & Plant Breeding
 - Horticulture

Faculty of Humanities and Social Sciences

- ✱ **BA**
 - Political Science
 - Sociology
 - History
 - Economics
 - Hindi
 - Geography
- ✱ **BA in Psychology**
- ✱ **BA in Yoga Science**
- ✱ **BPA**
 - Dance/Music/Others
- ✱ **MA**
 - English Literature
- ✱ **MA**
 - Political Science
 - Sociology
 - History
 - Economics
 - Hindi
 - Geography

Faculty of Commerce

- ✱ **BCom**
 - Computer Applications
 - Taxation
- ✱ **MCom**
 - Banking and Finance
 - Accounting and finance

Faculty of Computer Science & Application

- ✱ **BSc**
 - Information Technology
 - Computer Science
 - Data Science & Data Visualization
- ✱ **BCA**
 - Artificial Intelligence and Data Analysis
 - Data Science and Data Visualization
- ✱ **MCA**
 - Artificial Intelligence and Machine Learning

Faculty of Education

- ✱ **BEd**
- ✱ **BEd (Part Time)**
- ✱ **MEd**

Faculty of Library and Information Science

- ✱ **BLibSc**
- ✱ **MLibSc**

Faculty of Pharmacy (OCPR+ UIP)

- ✱ **DPharm**
- ✱ **BPharm/BPharm-LE**
- ✱ **MPharm (Pharmaceutics)**
- ✱ **MPharm (Pharmaceutical Chemistry)**
- ✱ **MPharm (Pharmacology)**
- ✱ **MPharm (Pharmaceutical Quality Assurance)**

Faculty of Management

- ✱ **BBA**
 - Business Intelligence and Analytics
 - BFSI
 - Fintech
 - DM
 - Retail Management
- ✱ **MBA**
 - Finance/HR/Marketing/IT
 - Data Analytics and Data Visualization
 - Digital Marketing
 - Logistics & Supply Chain

Faculty of Science

- ✱ **BSc (Physics/Chemistry/ Mathematics)**
- ✱ **BSc (Biology)**
- ✱ **BSc (Biotechnology)**
- ✱ **BSc (Forensic Science)**
 - Criminology
 - Digital and Cyber Forensic
- ✱ **BSc (Multimedia Animation and Design)**
- ✱ **BSc (Nutrition & Dietetics)**
- ✱ **BSc (Seed Technology)**
- ✱ **MSc (Physics)**
- ✱ **MSc (Chemistry)**
- ✱ **MSc (Mathematics)**
- ✱ **MSc (Biology)**
- ✱ **MSc (Biotechnology)**
- ✱ **MSc (Forensic Science)**
 - Criminology
 - Digital and Cyber Forensic

Faculty of Engineering

- ✱ **Diploma (Civil Engg.)**
- ✱ **Diploma (Computer Science and Engg.)**
- ✱ **Diploma (Electrical and Electronics Engg.)**
 - Electric Vehicle
- ✱ **Diploma (Electronics and Communication Engg.)**
- ✱ **Diploma (Mechanical Engg.)**
 - Fire & Safety Engineering
 - Mechatronics & Automation
 - Mining Engineering
- ✱ **Diploma-LE**
 - All Branches
- ✱ **BTech (Computer Science and Engg.)**
 - Artificial Intelligence & ML
 - BigData Analytics
 - Block Chain
 - Cloud Computing
 - Cyber Security
 - Data Science
 - User Interface/User Experience and Design
- ✱ **BTech (Civil Engg.)**
- ✱ **BTech (Electrical and Electronics Engg.)**
 - Electric Vehicle
 - Robotics & Automation

- ✱ **BTech (Electronics and Communication Engg.)**
- ✱ **BTech (Mechanical Engg.)**
 - Fire & Safety Engineering
 - Mechatronics & Automation
 - Mining Engineering
- ✱ **BTech-LE**
 - All Branches
- ✱ **MTech (Civil Engg.)**
 - Construction Technology and Management
 - Transportation Engg.
 - Structural Engg.
- ✱ **MTech (Computer Science and Engg.)**
 - AIML
 - Computer N/W
 - Cyber Security
- ✱ **MTech (Electronics and Communication Engg.)**
 - Digital Comm.
 - VLSI
- ✱ **MTech (Electrical and Electronics Engg.)**
 - Electric Vehicle (EV)
 - Power Sys.
 - Power Electronics
- ✱ **MTech (Mechanical Engg.)**
 - CAD/CAM
 - Machine Design
 - Thermal Engg.

Faculty of Law

- ✱ **Diploma**
 - Cyber Law
 - IPR
 - Environmental Law
 - Medico Legal Act
- ✱ **BA LLB (Hons)**
- ✱ **LLB (Hons)**
- ✱ **LLM**
 - Criminal Law
 - Corporate Law
 - Constitutional Law

Faculty of Media Studies

- ✱ **BA (Journalism and Mass Communication)**

Ph.D. (Doctoral Program)

- ✱ Agriculture
- ✱ Commerce
- ✱ Computer Science & Application
- ✱ Education
- ✱ Engineering (CSE, CE, ECE, EX, ME)
- ✱ English
- ✱ Law
- ✱ Library and Information Sciences
- ✱ Management
- ✱ Pharmacy
- ✱ Science (Physics, Chemistry, Mathematics)

Interested candidates should fill the application form with entrance test fee 2500/-

[Apply Online](https://phd.register.ouconnect.in) <https://phd.register.ouconnect.in>

☎ **0731-3565070, 9343696062/71**



OU Placements



Vidhi Jain
₹ **4.5** PACKAGE **LPA**

Himanshu Raj Singour
₹ **72** PACKAGE **LPA**

Akruti Rajput
₹ **4.5** PACKAGE **LPA**

₹ **4.4** PACKAGE **LPA**
Tanmay Soni

₹ **4.4** PACKAGE **LPA**
Harshita Singh

₹ **4.4** PACKAGE **LPA**
Astha Jain

₹ **4.4** PACKAGE **LPA**
Lovekush Verma

Prominent Recruiters (OGI)

Many more...



— Oriental Group of Institutions (OGI) —



**ORIENTAL INSTITUTE OF
SCIENCE & TECHNOLOGY, BHOPAL**



**ORIENTAL COLLEGE OF
TECHNOLOGY, BHOPAL**



**THE ORIENTAL SCHOOL
BHOPAL**



**ORIENTAL INSTITUTE OF
SCIENCE & TECHNOLOGY, JABALPUR**



0731-3565000

93436-96063 | 64 | 65 | 66 | 67



Scan QR to apply

Opp. Reoti Range, Gate No. 1, Jakhya, Sanwer Road, Indore